



Treetops
Hospice



Impact Report

2025/2026

Like Share Follow



Treetops Hospice, Derby Road, Risley, DE72 3SS
treetops.org.uk | 0115 949 1264
Registered Charity No. 519540

Inspected and rated

Good



Registered with
**FUNDRAISING
REGULATOR**

Welcome to our Impact Report

This is the first annual 'Impact Report' prepared by Treetops Hospice. Rightfully, it is our commitment to being accountable and transparent to all our funders,

primarily about how care services were delivered during the year and the resulting impact upon our patients and their families.

The majority of Treetops' funding comes through public donations and voluntary giving. We receive 18.2% of our income from NHS partners and generate the remaining 81% through a raft of activities including retail, lottery, events, in memory giving and grants from trusts and foundations.

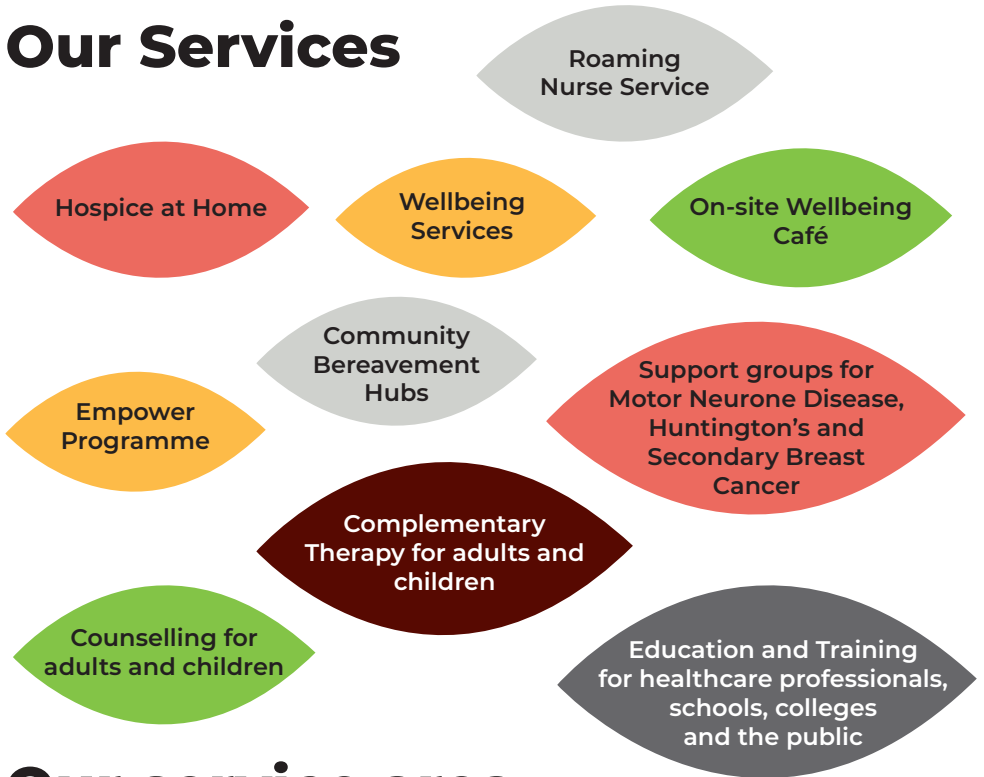
It is important to recognise that Treetops can operate so efficiently and effectively due to the commitment of our professional staff then also the dedication of over 600 volunteers spread throughout all areas of the charity's operation. This includes the Board of Trustees who give their time free of any charge to guide and govern the charity.

My personal thanks to everyone who helps Treetops achieve so many positive outcomes for patients and families facing their ultimate journey.

John Knight
Chief Executive

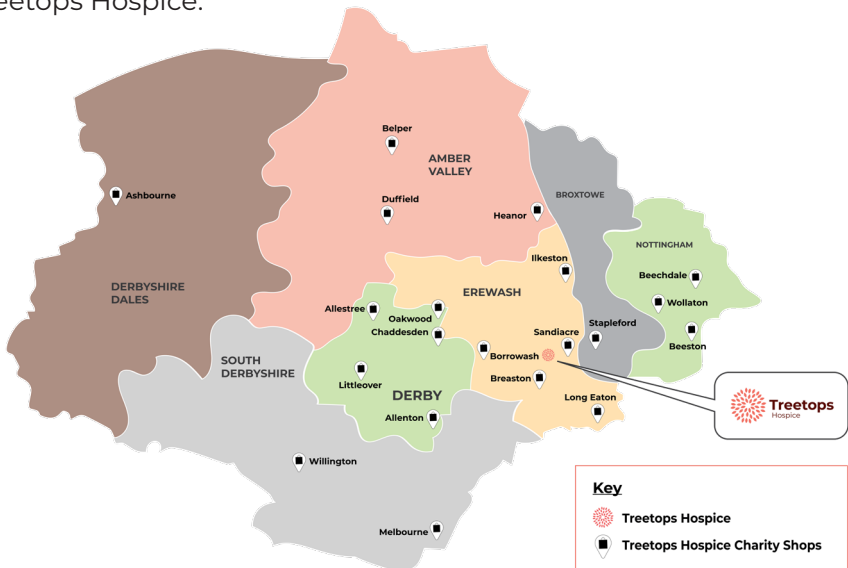


Our Services



Our service area

There are around 600,000 people living in the catchment area for Treetops Hospice.



Our year in numbers

In 2025, Treetops Hospice...



Supported **644** deaths across all clinical services

Delivered **31,646** hours of care

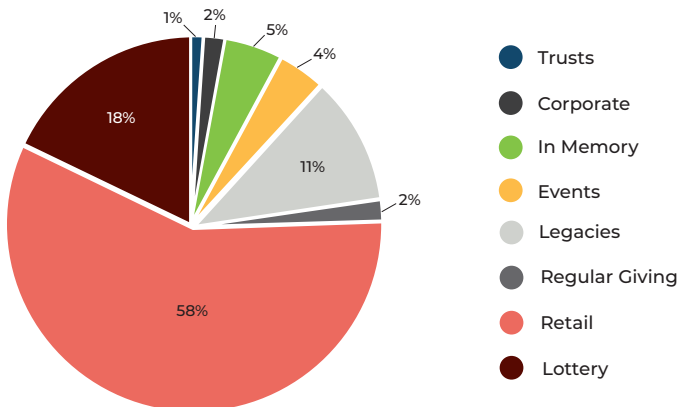


Received **2,105** referrals

Supported **2,116** patients across all services



How our wonderful supporters funded our care in 2025:



Patient Story

Behind every number in this report is a local family whose world has been changed by our care. The Burnhams have chosen to share their experience, offering a glimpse into what that support meant to them.



When Terry was diagnosed with vascular dementia and Alzheimer's disease, his family faced uncertainty, sleepless nights and the responsibility of caring for the man who had always cared for them. In Terry's final months, Treetops nurses stepped into their world and turned an incredibly difficult time into one with dignity and precious moments together.

Terry's son, Mark, explains that the support was far more than they ever expected. Our nurses became a familiar, trusted presence and "part of the family", bringing calm to Terry when he was distressed and giving his loved ones some reassurance. With Treetops providing expert overnight care, the family could finally rest, regain their strength and focus on being present for one another.

This support also allowed Terry's wife of 60 years, Lyn, to step back from the role of full time carer and simply be his wife again. Most importantly, our care meant Terry could remain at home, surrounded by those he loved. On the day he died, he was hand in hand with his family, exactly as he would have wanted.

"I can't describe the enormity of what Treetops does for the bigger picture – having them around gave our family the reassurance and breathing space we needed to focus on one another and on our own day-to-day responsibilities."

Intent of the Clinical Strategy

Treetops' clinical strategy sets out a clear ambition: to be recognised and commissioned as a modern, community-based specialist hospice that delivers measurable impact for people approaching the end of life, and for the wider health and care system.

We will focus our services on timely access to advice and specialist support wherever people live, integrated holistic care at home, and improved access to advice and help outside traditional working hours. Our intent is to shift to an approach that prioritises complex symptom management, crisis prevention, and practical support helping people stay in their preferred place of care and reducing avoidable hospital admissions and delays in discharge.

We will strengthen our role as a centre of excellence in emotional, psychological, and trauma-informed support for patients, carers and people experiencing bereavement, ensuring compassionate care that addresses the full impact of serious illness and loss.

We will deliver this through a highly skilled workforce educated in advanced clinical and communication capabilities and consistent standards across services.

Partnership is central to our strategy: working with primary care, acute trusts, community providers, care homes and fellow hospices to provide seamless pathways, contributing expertise to the Integrated Care System, and securing longer-term commissioning arrangements aligned to priorities such as admission avoidance and discharge facilitation.

Success will be evidenced through activity levels and through clear outcomes and impact, demonstrating improved patient experience, timely access to specialist support, increased ability to remain at home, and greater confidence from partners and commissioners.

In doing so, we will protect and strengthen our charitable purpose, target resources to make the greatest difference, and position Treetops as “your community specialist hospice” with a clear, trusted identity.

Philippa Shreeves
Director of Care

